



VAUGHAN INDUSTRIAL

# MAJOR50

RAIL  + AIR  + GROUND 

BUILD TO SUIT OPPORTUNITY | Q3 2026

**UP TO 1.1 MILLION SQ. FT.**

Contact Us for More Information:

**Kyle Hanna\***

Vice Chairman

416 798 6255

[kyle.hanna@cbre.com](mailto:kyle.hanna@cbre.com)

**Fraser McKenna\***

Vice Chairman

416 798 6275

[fraser.mckenna@cbre.com](mailto:fraser.mckenna@cbre.com)



Downtown Toronto

HWY 427

2 KM | 4 MIN  
Highway 427 Interchange



1 KM | 2 MIN  
CPKC Vaughan Intermodal

Major Mackenzie Drive

VAUGHAN INDUSTRIAL

# MAJOR 50

RAIL + AIR + GROUND

Highway 50



# MAJOR OPPORTUNITY

UP TO 1,125,722 SQ. FT.

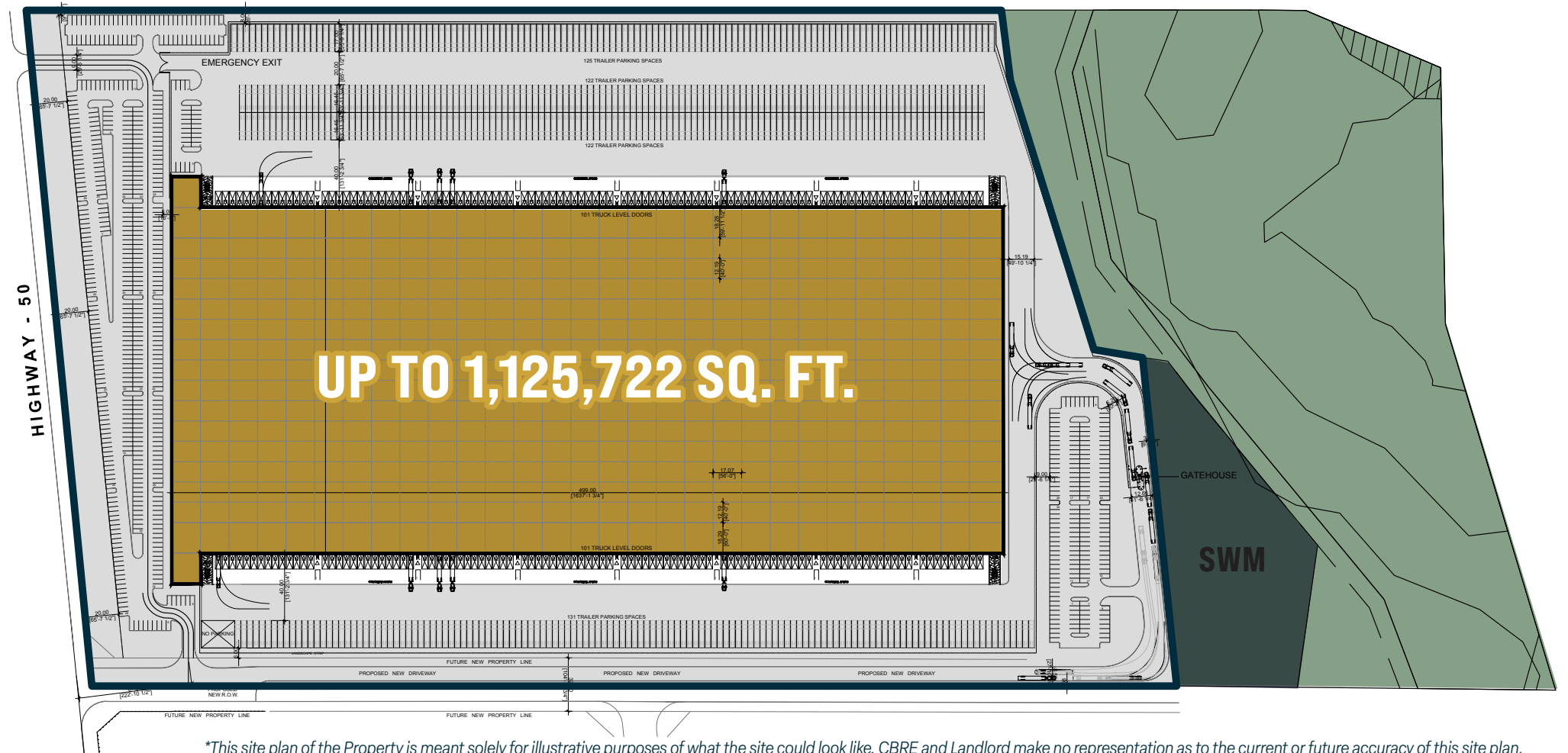
State-of-the-Art Construction

Q3 2026

Built-to-Suit Opportunity

Proudly Pursuing

LEED CERTIFICATION  
ZERO CARBON



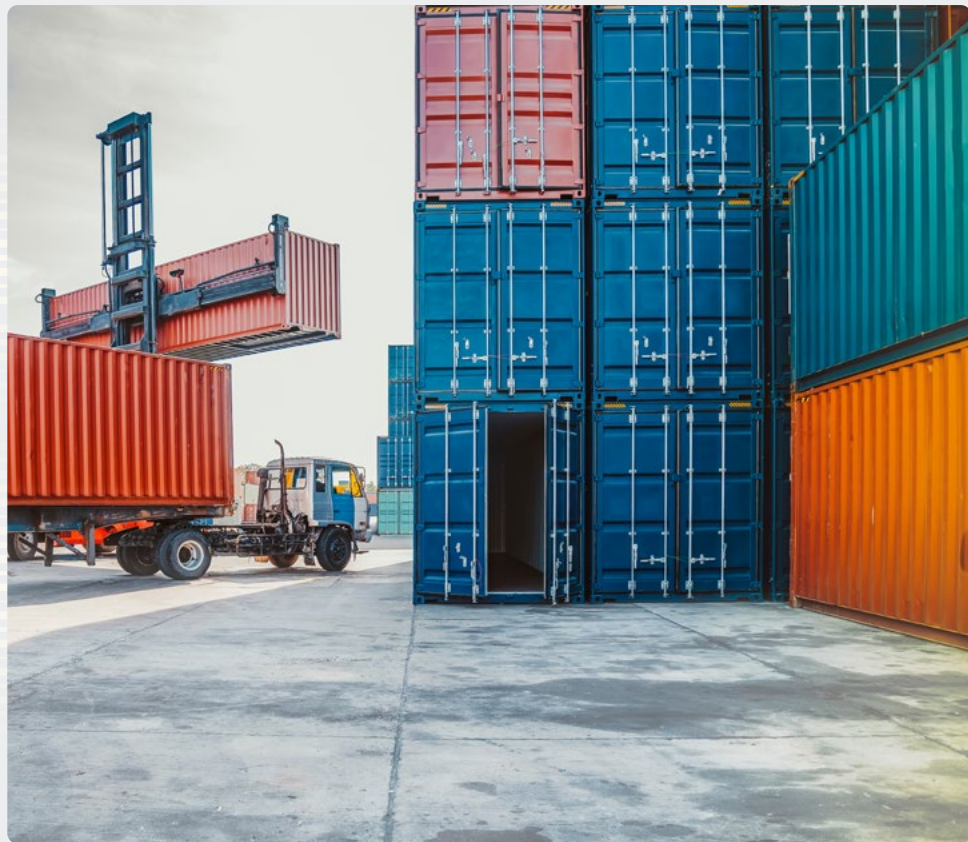
*\*This site plan of the Property is meant solely for illustrative purposes of what the site could look like. CBRE and Landlord make no representation as to the current or future accuracy of this site plan.*

## SPECIFICATIONS

<p><b>SHIPPING</b></p>	<p>202 Truck Level Doors 14 Drive-in Doors</p>	<p><b>BAY SIZES</b></p>	<p>56' width x 40' depth 60' Staging Bay</p>	<p>Vaughan Industrial Major50 (10223 Highway 50, Vaughan) offers a unique size in the market and the opportunity for a tenant to grow and develop within the Vaughan Enterprise Zone (VEZ) – a vast business area with significant goods movement infrastructure in Vaughan’s west end.</p>
<p><b>CLEAR HEIGHT</b></p>	<p>40'</p>	<p><b>PARKING</b></p>	<p>500 Trailer Parking Stalls 714 Car Parking Stalls</p>	<p>Situated at the intersection of Major Mackenzie Drive and Highway 50 in Vaughan, the Property is conveniently located at the gateway of Highway 427, offering excellent access to the rest of the 400-series highways, and close proximity to Downtown Toronto and Pearson International Airport for easy distribution.</p>

# VAUGHAN ENTERPRISE ZONE: RAIL + AIR + GROUND

*The Vaughan Enterprise Zone is a premiere destination that spans across several business parks.*



## CPKC VAUGHAN INTERMODAL

*2 Minutes to CPKC Vaughan Intermodal*

- ▶ #1 largest intermodal terminal in Canada!
- ▶ First and only transnational rail network in North America.
- ▶ 1,800 containers per day (more than 600,000 containers annually) are handled at the facility.
- ▶ 1,600 to 2,100 trucks pass through the yard everyday.
- ▶ Intermodal offers immediate access to Highway 427 via two interchanges at Rutherford Road to the south and Major Mackenzie Drive to the north.



## PEARSON INTERNATIONAL AIRPORT

*Canada's largest and busiest airport*

- ▶ Travel time from the VEZ to Pearson International Airport, Canada's busiest passenger and cargo airport, is 10 minutes.
- ▶ Approximately 50% of all the international air cargo in Canada is handled by the airport.
- ▶ Pearson Airport is the second-busiest airport in North America for international passengers.



## INFRASTRUCTURE IMPROVEMENTS

*Newly completed interchanges & future road expansion*

- ▶ **The 427 Expansion Complete!** Accessibility to Major50 has been enhanced by the recently completed Highway 427 expansion with full interchanges at Langstaff Road, Rutherford Road and Major Mackenzie Drive.
- ▶ **Coleraine Drive Bypass:** The expansion of Coleraine Drive to a 4-lane truck arterial will continue south from Mayfield Road directly into the Highway 427 and Major Mackenzie Drive interchange.



# VAUGHAN, ONTARIO A MAJOR LOGISTICS, WAREHOUSING & MANUFACTURING CENTER

Located in York Region, Vaughan is part of Canada's largest independent automotive parts and electronics manufacturing cluster. Automotive manufacturing and sales are supported by one of the fastest-growing municipalities in Ontario, attracting tens of thousands of new residents annually – three-quarters of whom have university educations.

Transportation and warehousing sector is thriving in Vaughan. As one of the largest transportation hubs in Ontario, this sector plays a crucial role in moving shipments all over North America.

## Vaughan Highlights

**3.9M+** *Labour force within a one-hour drive*

**3<sup>rd</sup>** *Largest municipality in the Greater Toronto Area (GTA) for large businesses (500+ employees)*

**25,000** *New residents attracted to York Region - the fastest growing municipality in Ontario*

**4<sup>th</sup>** *Largest business centre in the GTA by number of businesses.*





# MAJOR LOGISTICS THOROUGHFARE & CONNECTIVITY

A growing and energetic industrial community strategically connected to a robust and highly skilled labour force and a variety of highways that reach every corner of the Greater Toronto Area and beyond.

## Highway Access

<b>Highway 427</b> 2 km / 4 min	<b>Highway 407</b> 11 km / 8 min	<b>Highway 401</b> 22 km / 16 min
<b>Highway 400</b> 19 km / 14 min	<b>Highway 410</b> 22 km / 15 min	<b>Highway 404</b> 23 km / 23 min

## Transit

- Go Bus Bolton Route 37**  

**Nearest Bus Stop: 1 Minute Drive / 17 Minute Walk**  
 Connects to Toronto Union Station
- Bolton Transit Line / Stops**  

**Nearest Bus Stop: 1 Minute Drive / 17 Minute Walk**  
 This local transit line includes 39 new bus stops along the route with service running during peak commute hours

## Drive Times

<b>CPKC Vaughan Intermodal</b> 1 km / 2 min	<b>CN Brampton Yard</b> 16 km / 12 min	<b>Pearson Airport</b> 19 km / 12 min
<b>Downtown Toronto</b> 45 km / 35 min	<b>Vaughan Metropolitan Centre</b> 22 km / 16 min	<b>U.S. Border</b> 145 km / 1 hr 30 min





# MAJOR LABOUR FORCE

## Vaughan Demographics

331,504

Population

273,966

Labour Force

40.8 Yrs

Median Age

64.3%

Employment Rate

## Demographics by Radius

10 km

327,143

Population

20 km

1.5 Million

Population

30 km

4.1 Million

Population

267,047

Labour Force

1.3 Million

Labour Force

3.5 Million

Labour Force

37.5 Yrs

Median Age

38.3 Yrs

Median Age

39.4 Yrs

Median Age



# CORPORATE NEIGHBOURS & NEARBY AMENITIES







PHOTOS TAKEN SEPTEMBER 2023





# YOUR TRUSTED PARTNERS



[crestpoint.cclgroup.com](http://crestpoint.cclgroup.com)

Crestpoint Real Estate Investments Ltd. is a commercial real estate and mortgage investment manager dedicated to providing investors with direct access to a diversified portfolio of commercial real estate assets. Crestpoint's current portfolio has a market value in excess of \$9.7 billion and is comprised of over 36 million square feet of commercial properties. President & CEO Kevin Leon, Executive Vice President & COO Colin MacKellar and the rest of the Crestpoint team bring over 30 years of transaction and asset management experience and a significant presence within the Canadian commercial real estate community to Crestpoint.

Crestpoint is part of the Connor, Clark & Lunn Financial Group, a multi-boutique asset management company that provides investment management products and services to institutional and high net-worth clients. With offices across Canada and in Chicago, London, and Gurugram, India, Connor, Clark & Lunn Financial Group and its affiliates are collectively responsible for the management of more than \$100 billion in assets.

## CBRE

[cbre.ca](http://cbre.ca)

CBRE Limited is the world's most recognized commercial real estate services brand, we represent 90 of the Fortune 100.

Our global marketing platform helps maximize exposure and unlock value for our clients. Developing solutions for a broad range of clients has been at the forefront of our business and our expertise is unmatched. Our team of the top industrial market experts in Canada is on standby to assist you in navigating all aspects of your most important business decisions in the local market and beyond.



VAUGHAN INDUSTRIAL

# MAJOR50

RAIL  + AIR  + GROUND 

## Contact Us for More Information:

**Kyle Hanna\***

Vice Chairman

416 798 6255

kyle.hanna@cbre.com

**Fraser McKenna\***

Vice Chairman

416 798 6275

fraser.mckenna@cbre.com



CBRE LIMITED, REAL ESTATE BROKERAGE | 5935 AIRPORT ROAD, SUITE 700 | MISSISSAUGA, ON L4V 1W5 | T 416 674 7900 | F 416 674 6575 | WWW.CBRE.CA

This disclaimer shall apply to CBRE Limited, Real Estate Brokerage, and to all other divisions of the Corporation; to include all employees and independent contractors ("CBRE"). The information set out herein, including, without limitation, any projections, images, opinions, assumptions and estimates obtained from third parties (the "Information") has not been verified by CBRE, and CBRE does not represent, warrant or guarantee the accuracy, correctness and completeness of the Information. CBRE does not accept or assume any responsibility or liability, direct or consequential, for the Information or the recipient's reliance upon the Information. The recipient of the Information should take such steps as the recipient may deem necessary to verify the Information prior to placing any reliance upon the Information. The Information may change and any property described in the Information may be withdrawn from the market at any time without notice or obligation to the recipient from CBRE. CBRE and the CBRE logo are the service marks of CBRE Limited and/or its affiliated or related companies in other countries. All other marks displayed on this document are the property of their respective owners. All Rights Reserved. Mapping Sources: Canadian Mapping Services canadamapping@cbre.com; DMTI Spatial, Environics Analytics, Microsoft Bing, Google Earth.

No warranty or representation, expressed or implied, is made as to the accuracy of the information contained herein, and same is submitted subject to error and omissions.